



Government of India
Ministry of Earth Sciences



India Meteorological Department

PRESS RELEASE-7

Time of issue: 1330 hours IST

Dated: 30th November, 2024

Sub: Cyclonic Storm “FENGAL” [pronounced as FEINJAL] over Southwest Bay of Bengal (Post-Landfall Outlook: Red Message for North Tamil Nadu, Puducherry and adjoining south Andhra Pradesh Coasts)

Yesterday’s **Deep Depression** over Southwest Bay of Bengal moved nearly north-northwestwards and intensified into a **cyclonic storm “FENGAL” [pronounced as FEINJAL]** over the same region in the afternoon (1430 hours IST) of the same day, the 29th November, 2024. It moved northwestwards and lay centred at 0830 hours IST of today, the 30th November 2024 over the same region near latitude 12.3°N and longitude 80.9°E, about 120 km east-northeast of Puducherry, 110 km southeast of Chennai, 200 km north-northeast of Nagappattinam and 420 km north of Trincomalee.

It is likely to move nearly westwards and cross north Tamil Nadu-Puducherry coasts between Karaikal and Mahabalipuram close to Puducherry as a cyclonic storm with a wind speed of 70-80 kmph gusting to 90 kmph during evening of 30th November.

The system is being continuously monitored.

Forecast track and intensity are given in the following table:

Date/ Time (IST)	Position (Lat. °N/ long. °E)	Maximum sustained surface wind speed (Kmph)	Category of cyclonic disturbance
30.11.24/0830	12.3/80.9	75-85 gusting to 95	Cyclonic Storm
30.11.24/1130	12.3/80.5	75-85 gusting to 95	Cyclonic Storm
30.11.24/1730	12.2/80.0	70-80 gusting to 90	Cyclonic Storm
30.11.24/2330	12.1/79.7	55-65 gusting to 75	Deep Depression

Warnings:

(i) Rainfall Warning:

Tamil Nadu & Puducherry: Light to moderate rainfall at many places with **heavy to very heavy rainfall** at a few places and **extremely heavy rainfall** at isolated places over north Tamil Nadu – Puducherry on 30th November; **heavy to very heavy rainfall** at isolated places over interior Tamil Nadu on 01st December, and **heavy rainfall** at isolated places over Tamil Nadu on 02nd and 03rd December.

Coastal Andhra Pradesh: Light to moderate rainfall at many places with **heavy to very heavy rainfall** with **extremely heavy rainfall** at isolated places over south coastal Andhra Pradesh on 30th November, and **heavy rainfall** at isolated places on 01st December.

Contact: Cyclone Warning Division, Office of the Director General of Meteorology, India Meteorological Department, Ministry of Earth Sciences, E-mail: cyclonewarningdivision@gmail.com, Website: rsmcnewdelhi.imd.gov.in, Spatial rainfall distribution: Isolated: <25%, A few: 26-50%, Many: 51-75%, Most: 76-100%, Rainfall amount (mm): Heavy rain: 64.5 – 115.5, Very heavy rain: 115.6 – 204.4, Extremely heavy rain: 204.5 or more.

Rayalaseema: Light to moderate rainfall at many places with **heavy to very heavy rainfall** with **extremely heavy rainfall** at isolated places is likely on 30th November; **heavy rainfall** at isolated places on 01st December.

South interior Karnataka: Light to moderate rainfall at many places with isolated **heavy rainfall** is likely on 30th November, **heavy to very heavy rainfall** at isolated places on 01st & 2nd December.

Kerala: Light to moderate rainfall at many places with isolated heavy rainfall is likely on 30th November, **heavy to very heavy rainfall** at isolated places on 01st & 2nd December.

(ii) Wind warning:

- **Southwest Bay of Bengal:** Gale wind speed reaching 75-85 gusting to 95 is prevailing over southwest Bay of Bengal. It is likely to decrease gradually becoming 55-65 kmph gusting to 75 kmph by night of 30th November.
- **Adjoining areas of westcentral Bay of Bengal:** Squally wind speed reaching 55-65 kmph gusting to 75 kmph is likely to prevail over adjoining areas of westcentral Bay of Bengal till night of 30th November. It is likely to decrease thereafter.
- **Along & off North Tamil Nadu – Puducherry and adjoining South Andhra Pradesh coasts:** Gale wind speed reaching 75-85 gusting to 95 is prevailing along & off **North Tamil Nadu - Puducherry and adjoining South Andhra Pradesh coasts**. It is likely to prevail till evening of 30th November and gradually decrease thereafter.
- **Costal districts of north Tamil Nadu & south Andhra Pradesh:** Gale wind speed reaching 60-70 kmph gusting to 80 kmph is prevailing over costal districts of Tamil Nadu (Tiruvallur, Chennai, Chengalpattu, Villupuram and Puducherry) and Andhra Pradesh (Tirupati and Nellore). It is likely to increase becoming 75-85 gusting to 95 kmph over costal districts of Tamil Nadu (**Tiruvallur, Chennai, Chengalpattu, Villupuram, Puducherry Cuddalore, Mayiladuthurai and Nagappattinam**) and Andhra Pradesh (**Tirupati, Nellore and Prakasham**) from 30th November morning to evening of 30th November. It is likely to decrease thereafter.
- **Along & off South Tamil Nadu coast and Gulf of Mannar:** Squally wind speed reaching 45-55 kmph gusting to 65 kmph is likely to prevail till 30th evening and gradually decrease thereafter.

(iii) Sea condition:

Very Rough to High Sea conditions is very likely over southwest Bay of Bengal adjoining areas of westcentral Bay of Bengal, Gulf of Mannar and along & off Tamil Nadu-Puducherry, South Andhra Pradesh and East Sri Lanka coasts till evening of 30th November. It will gradually improve becoming Very rough to rough till night of 30th November.

(iv) Flash Flood Guidance (Graphics Attached):

24 hours Outlook for the Flash Flood Risk (FFR) till 0530 IST of 30-11-2024 :

Low to Moderate flash flood risk likely over few watersheds & neighbourhoods of following Met Sub-divisions during next 24 hours.

Contact: Cyclone Warning Division, Office of the Director General of Meteorology, India Meteorological Department, Ministry of Earth Sciences, E-mail: cyclonewarningdivision@gmail.com, Website: rsmcnewdelhi.imd.gov.in, Spatial rainfall distribution: Isolated: <25%, A few: 26-50%, Many: 51-75%, Most: 76-100%, Rainfall amount (mm): Heavy rain: 64.5 – 115.5, Very heavy rain: 115.6 – 204.4, Extremely heavy rain: 204.5 or more.

Coastal Andhra Pradesh & Yanam - Nellore district.

Rayalaseema - Chittoor and Kadapa districts.

Tamil Nadu - Puducherry & Karaikal - Puducherry, Chennai, Cuddalore, Kanchipuram, Tiruvallur, Tiruvannamalai, Vellore. Dharampuri, Krishnagiri and Villupuram districts.

Surface runoff/ Inundation may occur at some fully saturated soils & low-lying areas over Area of Concern (AoC) as shown in map due to expected rainfall occurrence in next 24 hours.

(v) Storm surge Warning (Graphics Attached):

Storm surge of about 1 meter height above the astronomical tide is likely to inundate the low lying areas of the coastal districts of north Tamil Nadu, Puducherry and adjoining south Andhra Pradesh during the time of landfall.

(vi) Fisherman warning (Graphics Attached):

- Total suspension of fishing operations.
- Fishermen are advised not venture into southwest Bay of Bengal adjoining areas of westcentral Bay of Bengal, Gulf of Mannar and along & off Tamil Nadu-Puducherry, South Andhra Pradesh and East Sri Lanka coasts till 30th November.
- Fishermen out at sea are advised to return to coast.

(vii) Impact Expected [POST LANDFALL OUTLOOK] over coastal districts of North Tamil Nadu (Tiruvallur, Chennai, Chengalpattu, Puducherry Cuddalore, Mayiladuthurai, Nagappattinam, Dharampuri, Krishnagiri and Villupuram) and Andhra Pradesh (Tirupati, Nellore, Kadapa and Prakasham)]

- Damage to thatched huts.
- Minor damage to power and communication lines due to breaking of branches.
- Major damage to Kutcha and minor damage to Pucca roads.
- Some damage to paddy crops, banana, papaya trees and orchards.
- Sea water inundation in low lying areas after erosion of Kutcha embankments.
- Localized Flooding of roads, water logging in low lying areas and closure of underpasses mainly in urban areas of the above region.
- Occasional reduction in visibility due to heavy rainfall.
- Disruption of traffic in major cities due to water logging in roads leading to increased travel time.
- Damage to horticulture and standing crops in some areas due to inundation.
- Breaking of tree branches, uprooting of small trees including banana, papaya and drumstick.

(viii) Action Suggested

- Total suspension of fishing operations.
- Fishermen are advised not venture into southwest Bay of Bengal adjoining areas of westcentral Bay of Bengal, Gulf of Mannar and along & off Tamil Nadu-Puducherry, South Andhra Pradesh and East Sri Lanka coasts till 30th November.
- Fishermen out at sea are advised to return to coast.
- The ships plying over the area need to be regulated.
- People should stay in safe places during 30th morning to evening.
- Check for traffic congestion on your route before leaving for your destination.

Contact: Cyclone Warning Division, Office of the Director General of Meteorology, India Meteorological Department, Ministry of Earth Sciences, E-mail: cyclonewarningdivision@gmail.com, Website: rsmcnewdelhi.imd.gov.in, Spatial rainfall distribution: Isolated: <25%, A few: 26-50%, Many: 51-75%, Most: 76-100%, Rainfall amount (mm): Heavy rain: 64.5 – 115.5, Very heavy rain: 115.6 – 204.4, Extremely heavy rain: 204.5 or more.

- Follow any traffic advisories that are issued in this regard.
- Avoid going to areas that face the water logging problems often.
- Special care may be taken for fishing ponds and poultries over coastal areas.
- Avoid staying in vulnerable structure.
-

(ix) Agromet advisories [over coastal districts of Tamil Nadu – Puducherry and adjoining south Andhra Pradesh]

Provide adequate drainage facilities for the removal of excess water from rice, cotton, sugarcane, turmeric and vegetable fields, coconut and banana orchards. Provide mechanical support to banana plants to prevent lodging.

- Make arrangements to drain out excess water from the standing crop fields and fruit orchards in Kerala and Coastal Andhra Pradesh.
- Harvest the matured crops and keep it in safe place.
- Provide mechanical support to horticultural crops and staking to vegetables.

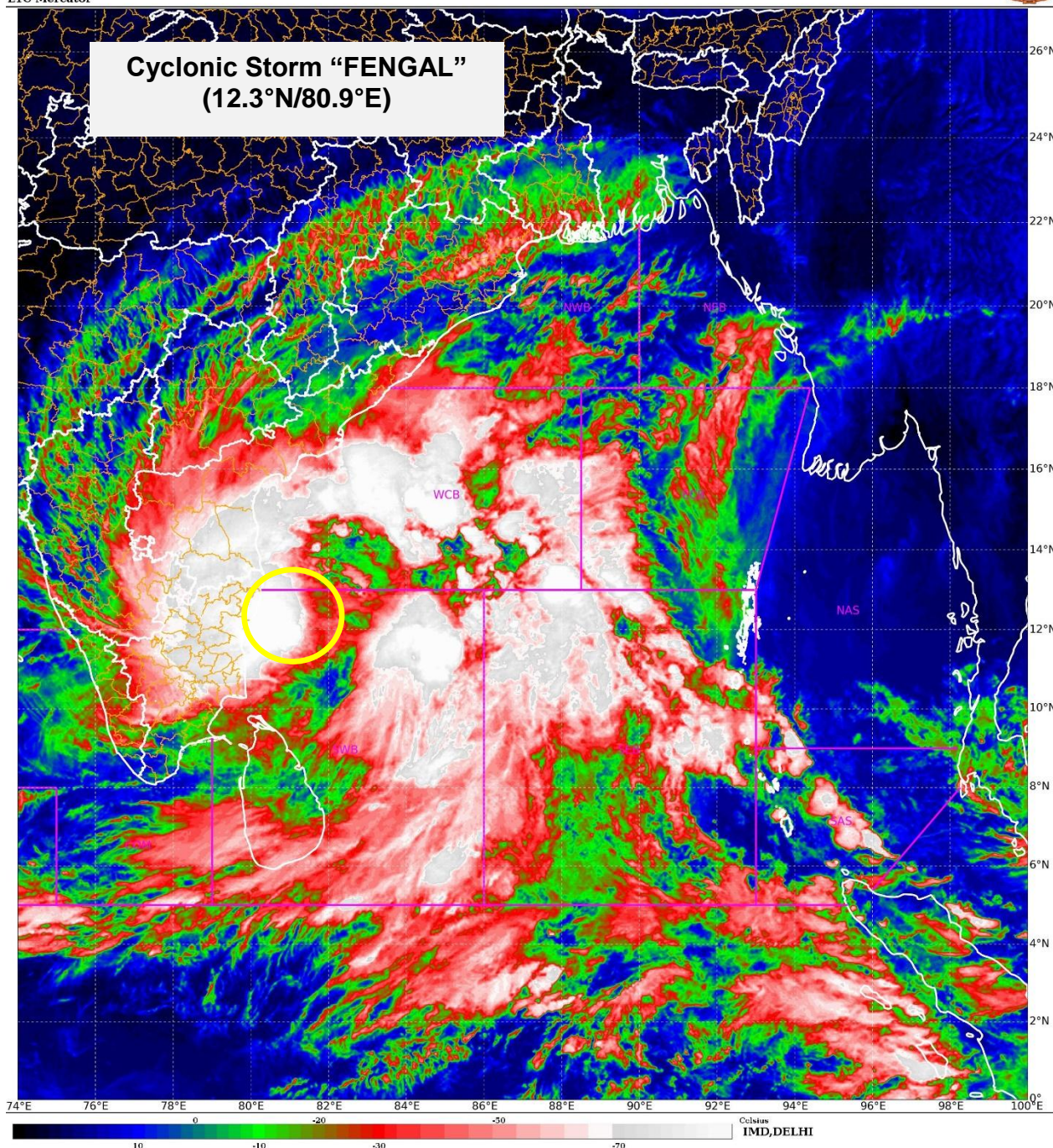
All associated graphics have been kept in Annexure-I. The 24 hours accumulated realised rainfall (≥ 7 cm) ending at 0830 hours IST of 30th November is kept in Annexure-II.

Next Press Release will be issued at 1430 hours IST of tomorrow, the 1st December 2024.

Contact: Cyclone Warning Division, Office of the Director General of Meteorology, India Meteorological Department, Ministry of Earth Sciences, E-mail: cyclonewarningdivision@gmail.com, Website: rsmcnewdelhi.imd.gov.in, Spatial rainfall distribution: Isolated: <25%, A few: 26-50%, Many: 51-75%, Most: 76-100%, Rainfall amount (mm): Heavy rain: 64.5 – 115.5, Very heavy rain: 115.6 – 204.4, Extremely heavy rain: 204.5 or more.

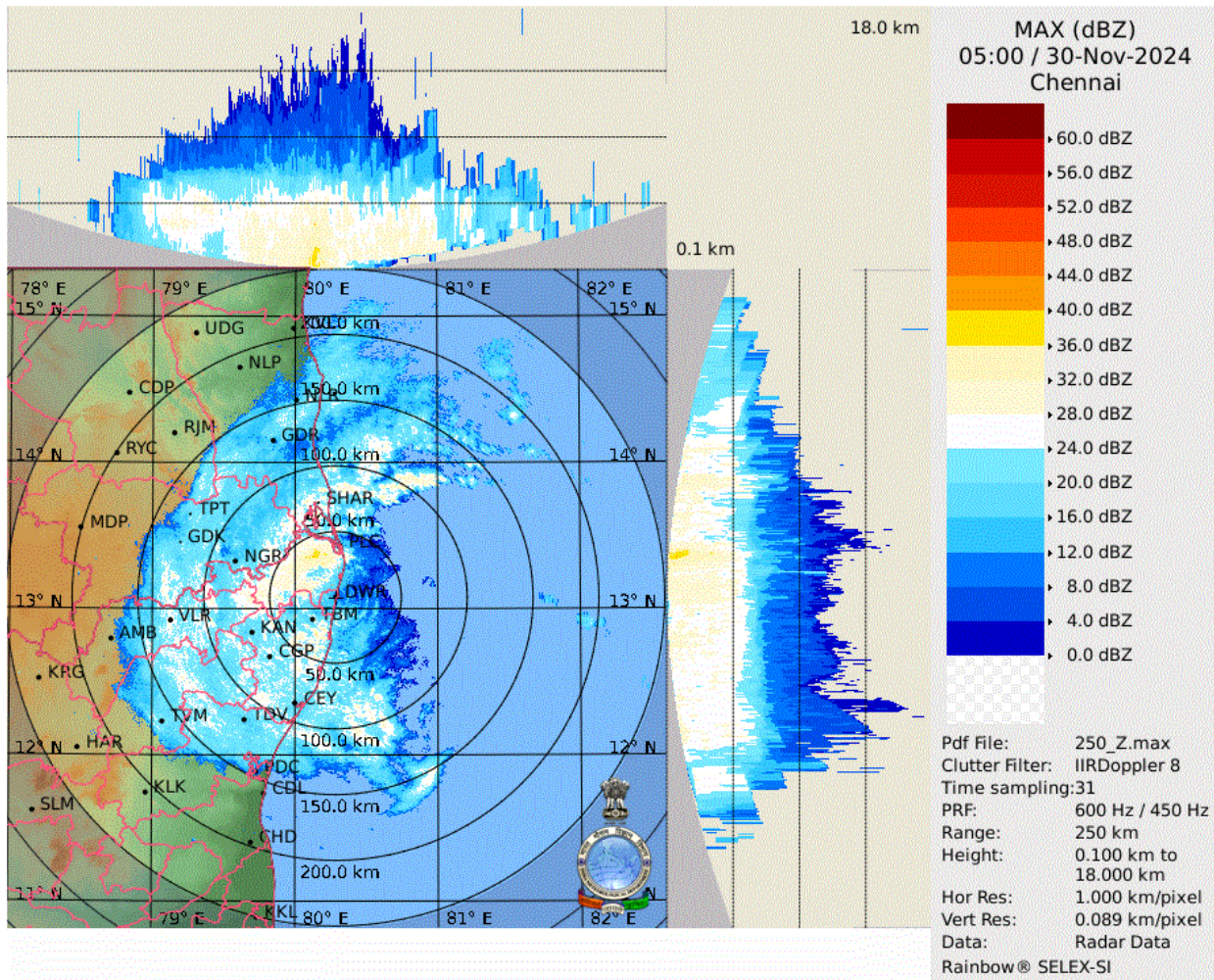
SAT : INSAT-3DR IMG
IMG_TIR1_TEMP 10.8 um
L1C Mercator

30-11-2024/(0545 to 0612) GMT
30-11-2024/(1115 to 1142) IST



Contact: Cyclone Warning Division, Office of the Director General of Meteorology, India Meteorological Department, Ministry of Earth Sciences, E-mail: cyclonewarningdivision@gmail.com, Website: rsmcnewdelhi.imd.gov.in, Spatial rainfall distribution: Isolated: <25%, A few: 26-50%, Many: 51-75%, Most: 76-100%, Rainfall amount (mm): Heavy rain: 64.5 – 115.5, Very heavy rain: 115.6 – 204.4, Extremely heavy rain: 204.5 or more.

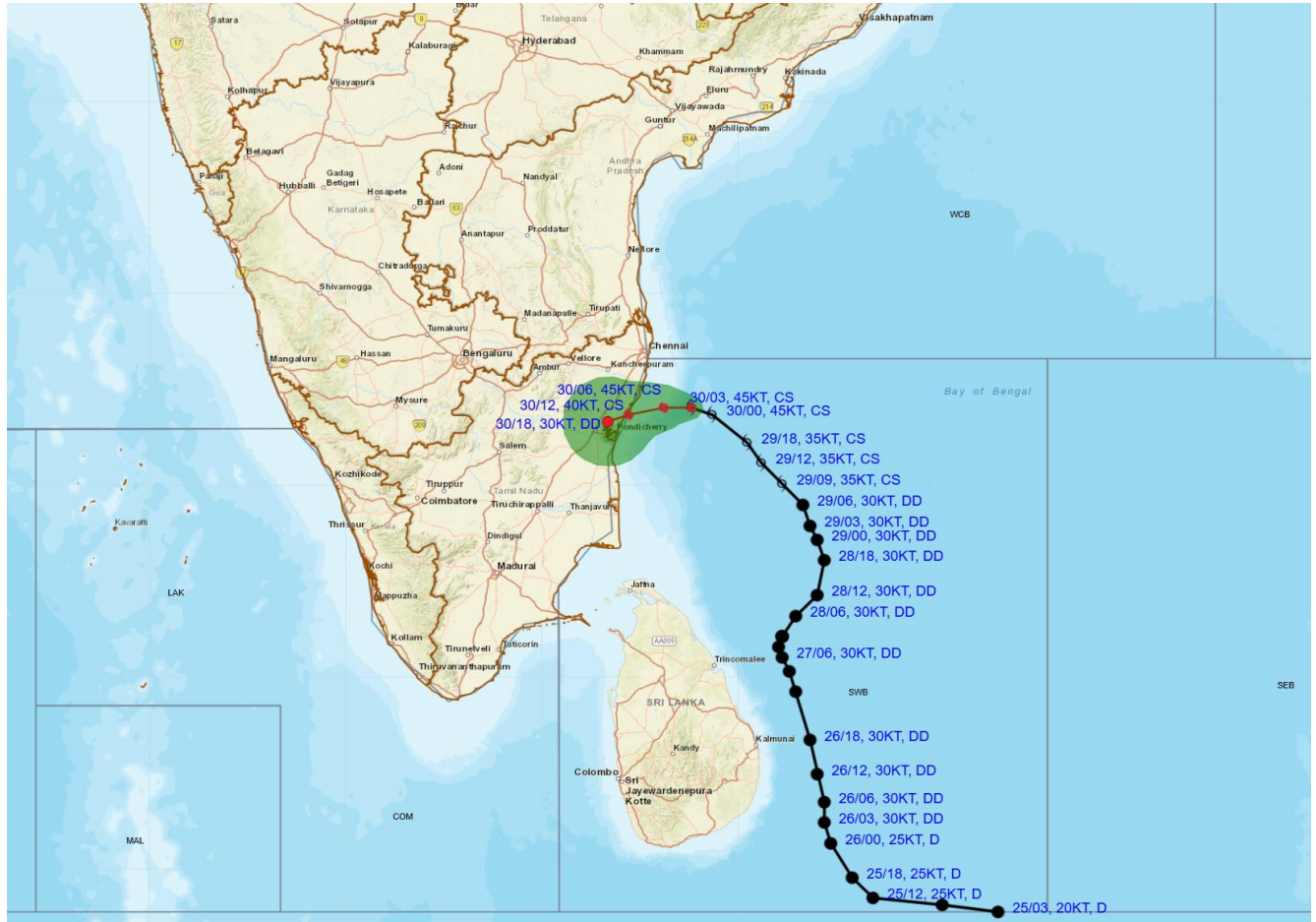
Doppler Weather Radar Observation (Max Z) at Chennai



Contact: Cyclone Warning Division, Office of the Director General of Meteorology, India Meteorological Department, Ministry of Earth Sciences, E-mail: cyclonewarningdivision@gmail.com, Website: rsmcnewdelhi.imd.gov.in, Spatial rainfall distribution: Isolated: <25%, A few: 26-50%, Many: 51-75%, Most: 76-100%, Rainfall amount (mm): Heavy rain: 64.5 – 115.5, Very heavy rain: 115.6 – 204.4, Extremely heavy rain: 204.5 or more.



OBSERVED AND FORECAST TRACK ALONG WITH CONE OF UNCERTAINTY OF CYCLONIC STORM "FENGAL" OVER SOUTHWEST BAY OF BENGAL BASED ON 0300 UTC (0830 HRS. IST) OF 30TH NOVEMBER, 2024.



DATE/TIME : IN UTC
 IST : UTC + 0530
 KT : NAUTICAL MILE S/HOUR = 1.85 KM/HOUR
 LPA : LOW PRESSURE AREA
 WML : WELL MARKED LOW PRESSURE AREA
 D : DEPRESSION (17-27 KT)
 DD : DEEP DEPRESSION (28-33 KT)
 CS : CYCLONIC STORM (34-47 KT)
 SCS : SEVERE CYCLONIC STORM (48-63 KT)
 VSCS : VERY SEVERE CYCLONIC STORM (64-89 KT)
 ESCS : EXTREMELY SEVERE CYCLONIC STORM (90-119 KT)
 SuCS : SUPER CYCLONIC STORM (≥120 KT)

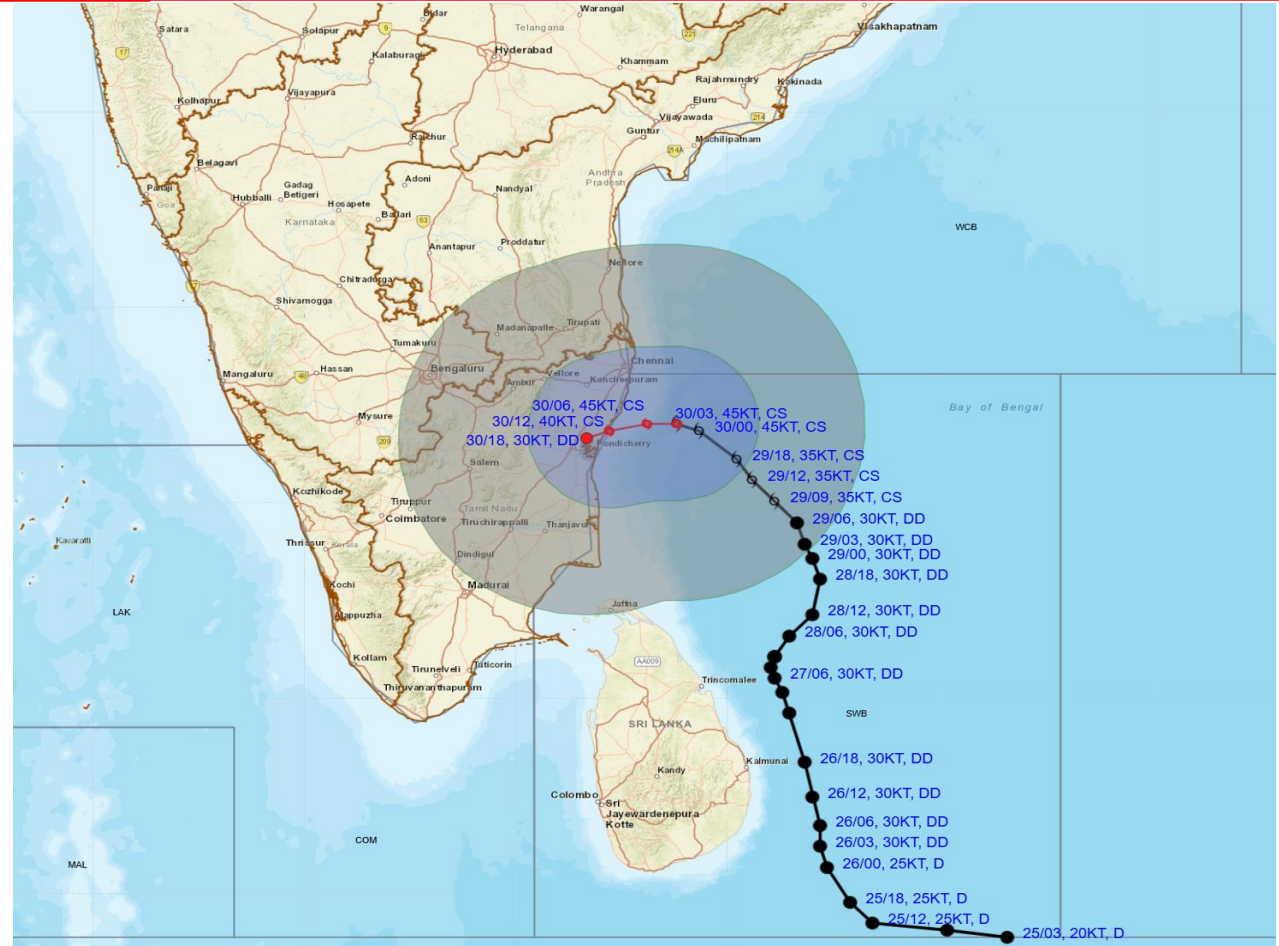
● LESS THAN 34 KT
 ○ 34-47 KT
 ○ ≥ 48 KT
 — OBSERVED TRACK
 — FORECAST TRACK
 ▲ CONE OF UNCERTAINTY

Forecast	DISTANCE (KM) AND DIRECTION FROM STATIONS			
	CHENNAI/MINAMB AKKAM	MO PONDICHERRY	NAGAPPATTINAM	TRINCOMALEE
30.11.24/0300	110, SE	120, ENE	210, NE	420, N
30.11.24/0600	90, SSE	80, ENE	180, NNE	420, N
30.11.24/1200	90, SSW	30, NE	160, N	430, NNW
30.11.24/1800	110, SSW	20, NW	150, N	430, NNW

Contact: Cyclone Warning Division, Office of the Director General of Meteorology, India Meteorological Department, Ministry of Earth Sciences, E-mail: cyclonewarningdivision@gmail.com, Website: rsmcnewdelhi.imd.gov.in, Spatial rainfall distribution: Isolated: <25%, A few: 26-50%, Many: 51-75%, Most: 76-100%, Rainfall amount (mm): Heavy rain: 64.5 – 115.5, Very heavy rain: 115.6 – 204.4, Extremely heavy rain: 204.5 or more.



OBSERVED AND FORECAST TRACK ALONGWITH QUADRANT WIND DISTRIBUTION OF CYCLONIC STORM "FENGAL" OVER SOUTHWEST BAY OF BENGAL BASED ON 0300 UTC (0830 HRS. IST) OF 30TH NOVEMBER, 2024.



DATE/TIME : IN UTC
 IST : UTC + 0530
 KT : NAUTICAL MILE S/HOUR = 1.85 KM/HOUR
 LPA : LOW PRESSURE AREA
 WML : WELL MARKED LOW PRESSURE AREA
 D : DEPRESSION (17-27 KT)
 DD : DEEP DEPRESSION (28-33 KT)
 CS : CYCLONIC STORM (34-47 KT)
 SCS : SEVERE CYCLONIC STORM (48-63 KT)
 VSCS : VERY SEVERE CYCLONIC STORM (64-89 KT)
 ESCS : EXTREMELY SEVERE CYCLONIC STORM (90-119 KT)
 SuCS : SUPER CYCLONIC STORM (≥ 120 KT)

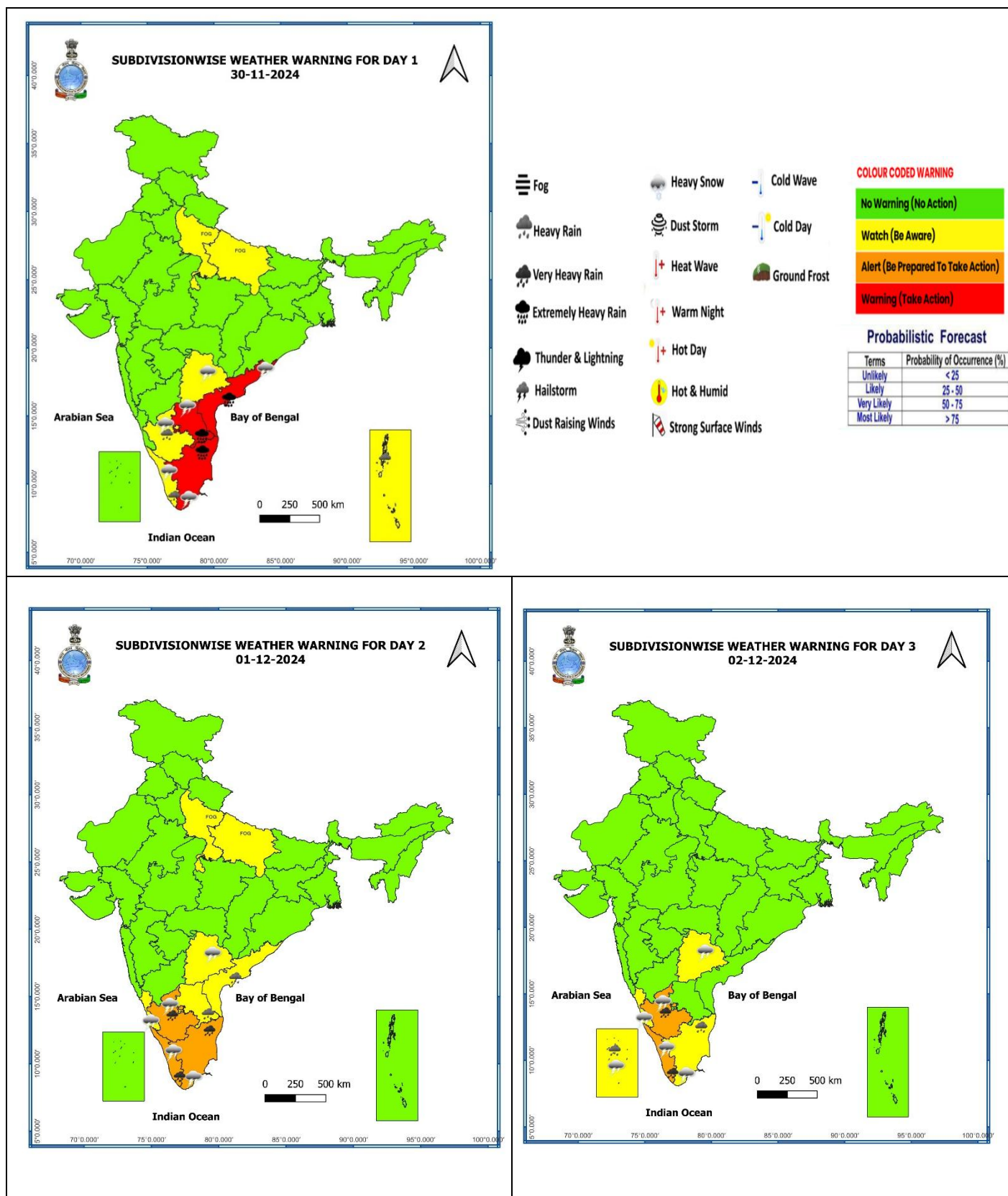
● LESS THAN 34 KT
 ○ 34-47 KT
 ● ≥ 48 KT
 — OBSERVED TRACK
 — FORECAST TRACK
 ● CONE OF UNCERTAINTY
 AREA OF MAXIMUM SUSTAINED WIND SPEED:
 ■ 28-33 KT (52-61 KMPH)
 ■ 34-49 KT (62-91 KMPH)
 ■ 50-63 KT (92-117 KMPH)
 ■ ≥ 64 KT (≥ 118 KMPH)

IMPACT OVER THE SEA

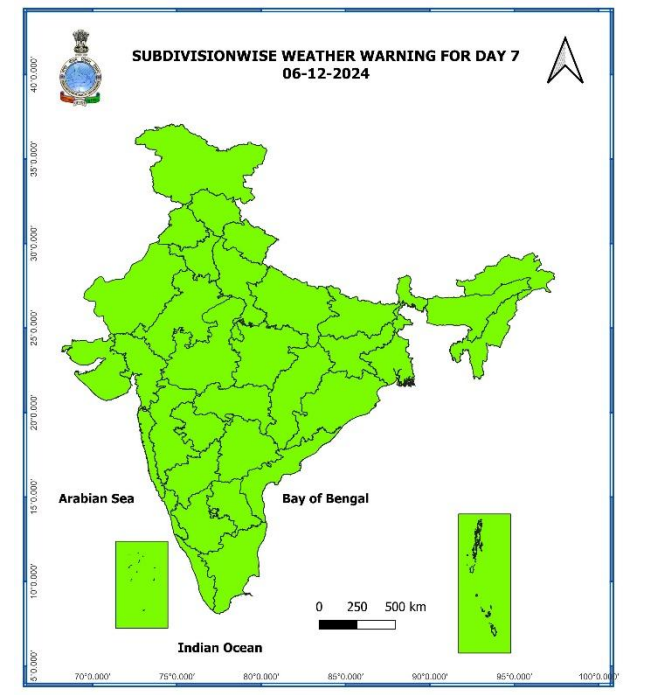
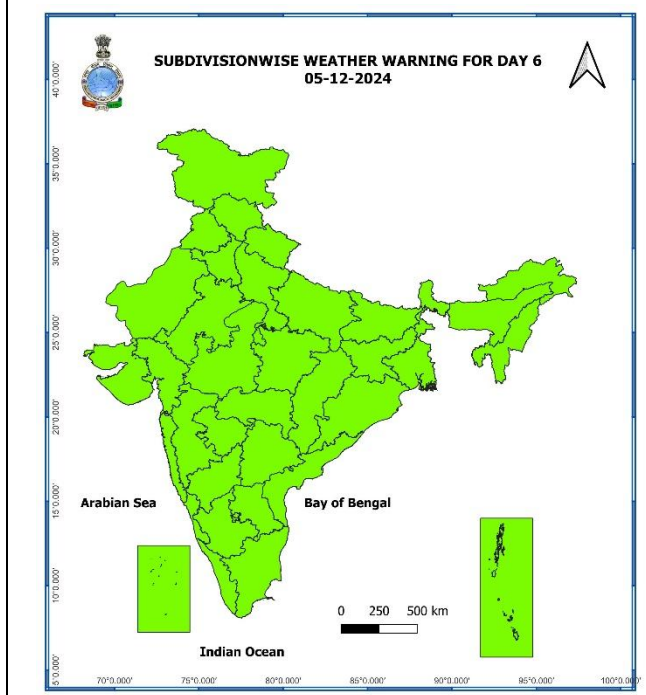
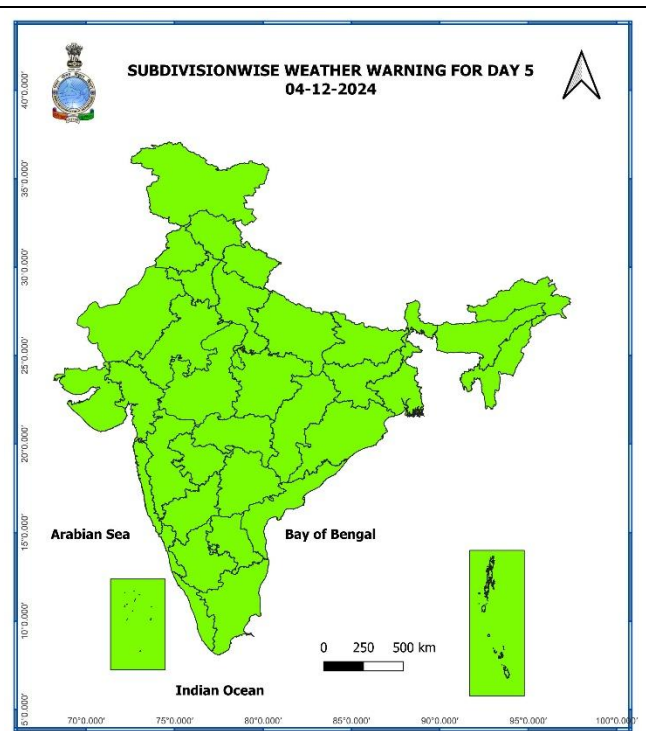
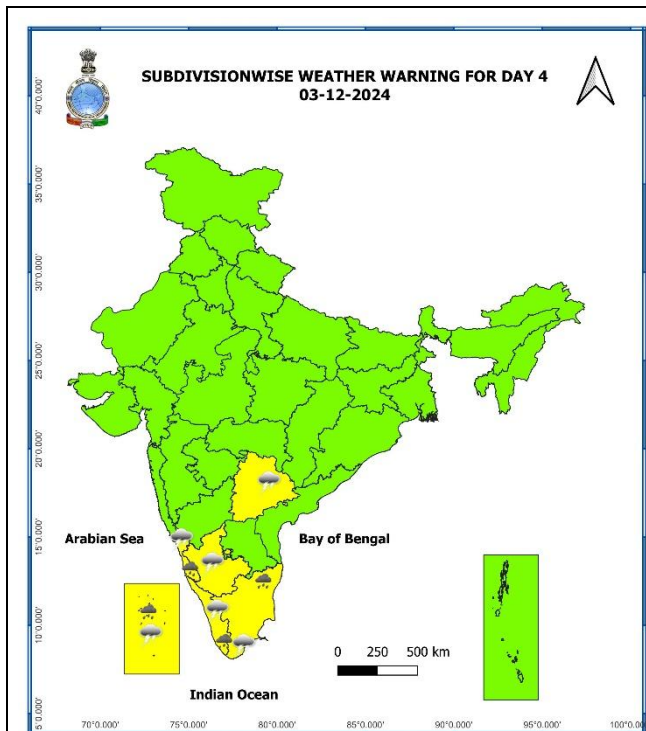
MSW (knot/kmph)	Impact	Action
28-33 (52-61)	Very rough seas	Total suspension of fishing operations
34-49 (62-91)	High to very high seas	Total suspension of fishing operations
50-63 (92-117)	Very high seas	Total suspension of fishing operations
≥ 64 (≥ 118)	Phenomenal	Total suspension of fishing operations

Contact: Cyclone Warning Division, Office of the Director General of Meteorology, India Meteorological Department, Ministry of Earth Sciences, E-mail: cyclonewarningdivision@gmail.com, Website: rsmcnewdelhi.imd.gov.in, Spatial rainfall distribution: Isolated: <25%, A few: 26-50%, Many: 51-75%, Most: 76-100%, Rainfall amount (mm): Heavy rain: 64.5 – 115.5, Very heavy rain: 115.6 – 204.4, Extremely heavy rain: 204.5 or more.

Weather Warning Graphics



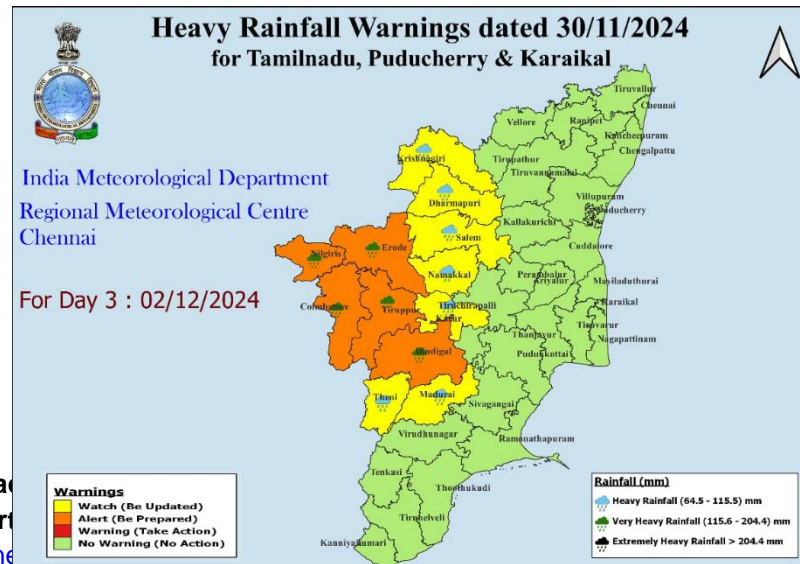
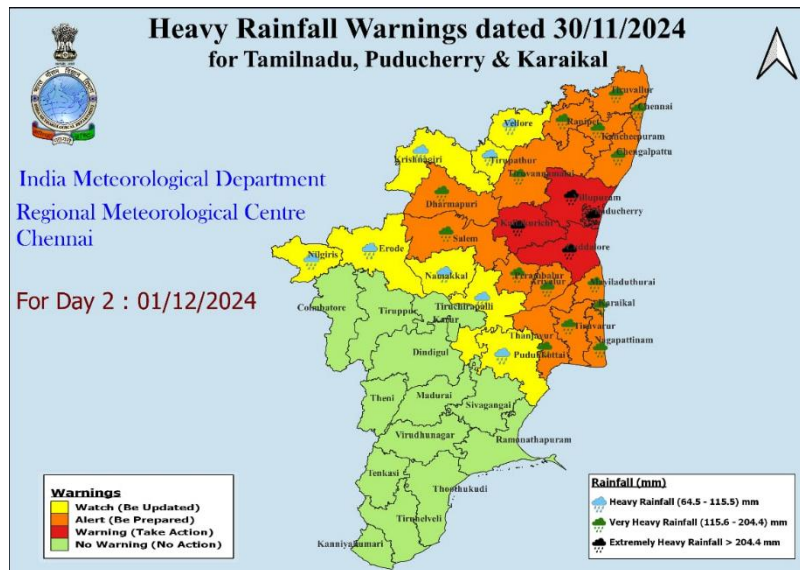
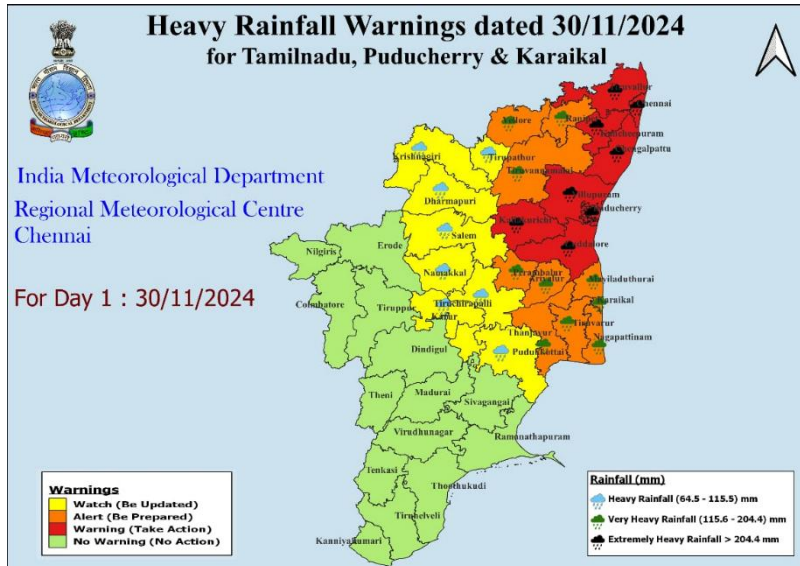
Contact: Cyclone Warning Division, Office of the Director General of Meteorology, India Meteorological Department, Ministry of Earth Sciences, E-mail: cyclonewarningdivision@gmail.com, Website: rsmcnewdelhi.imd.gov.in, Spatial rainfall distribution: Isolated: <25%, A few: 26-50%, Many: 51-75%, Most: 76-100%, Rainfall amount (mm): Heavy rain: 64.5 – 115.5, Very heavy rain: 115.6 – 204.4, Extremely heavy rain: 204.5 or more.



- Action may be taken based on **ORANGE** AND **RED** COLOUR warnings.
- Vulnerable regions likely urban and hilly areas action may be initiated for heavy rainfall warning.
- As the lead period increases forecast accuracy decreases.

Contact: Cyclone Warning Division, Office of the Director General of Meteorology, India Meteorological Department, Ministry of Earth Sciences, E-mail:cyclonewarningdivision@gmail.com, Website: rsmcnewdelhi.imd.gov.in, Spatial rainfall distribution: Isolated: <25%, A few: 26-50%, Many: 51-75%, Most: 76-100%, Rainfall amount (mm): Heavy rain: 64.5 – 115.5, Very heavy rain: 115.6 – 204.4, Extremely heavy rain: 204.5 or more.

District-Wise Warning Graphics of Tamil Nadu & Puducherry



Contact
Department
rsmcne

of Meteorology, India Meteorological
ningdivision@gmail.com, Website:

A few: 26-50%, Many: 51-75%, Most:
76-100%, Rainfall amount (mm): Heavy rain: 64.5 – 115.5, Very heavy rain: 115.6 – 204.4, Extremely heavy
rain: 204.5 or more.

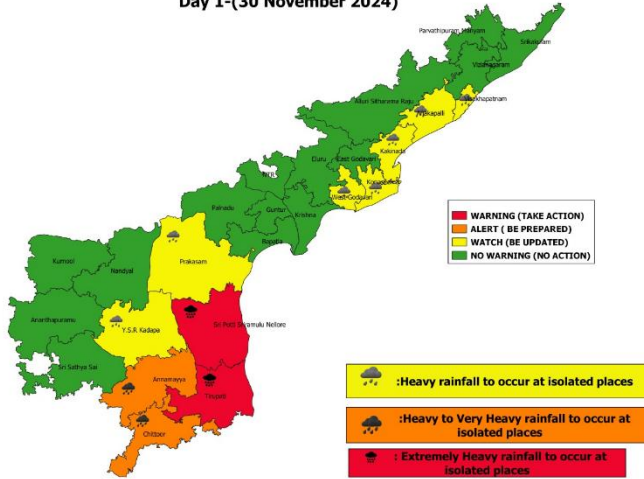
District-Wise Warning Graphics of Andhra Pradesh



Rainfall warnings for Andhra Pradesh and Yanam.
Valid from 1300 hrs IST of 30.11.2024 to 0830 hrs IST of 01.12.2024

Date of Issue:- 30 November 2024

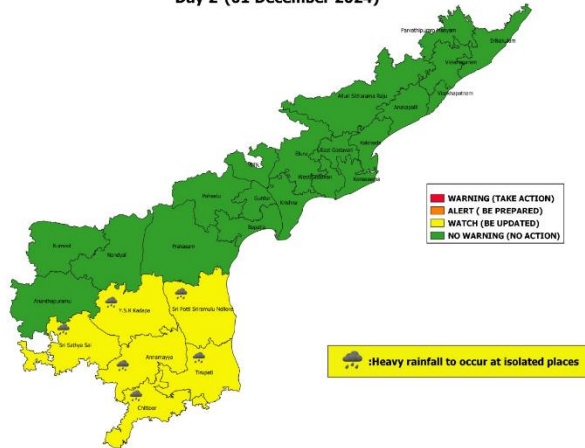
Day 1-(30 November 2024)



Rainfall warnings for Andhra Pradesh and Yanam.
Valid from 0830 hrs IST of 01.12.2024 to 0830 hrs IST of 02.12.2024

Date of Issue:- 30 November 2024

Day 2-(01 December 2024)



Contact: Cyclone Warning Division, Office of the Director General of Meteorology, India Meteorological Department, Ministry of Earth Sciences, E-mail: cyclonewarningdivision@gmail.com, Website: rsmcnewdelhi.imd.gov.in, Spatial rainfall distribution: Isolated: <25%, A few: 26-50%, Many: 51-75%, Most: 76-100%, Rainfall amount (mm): Heavy rain: 64.5 – 115.5, Very heavy rain: 115.6 – 204.4, Extremely heavy rain: 204.5 or more.

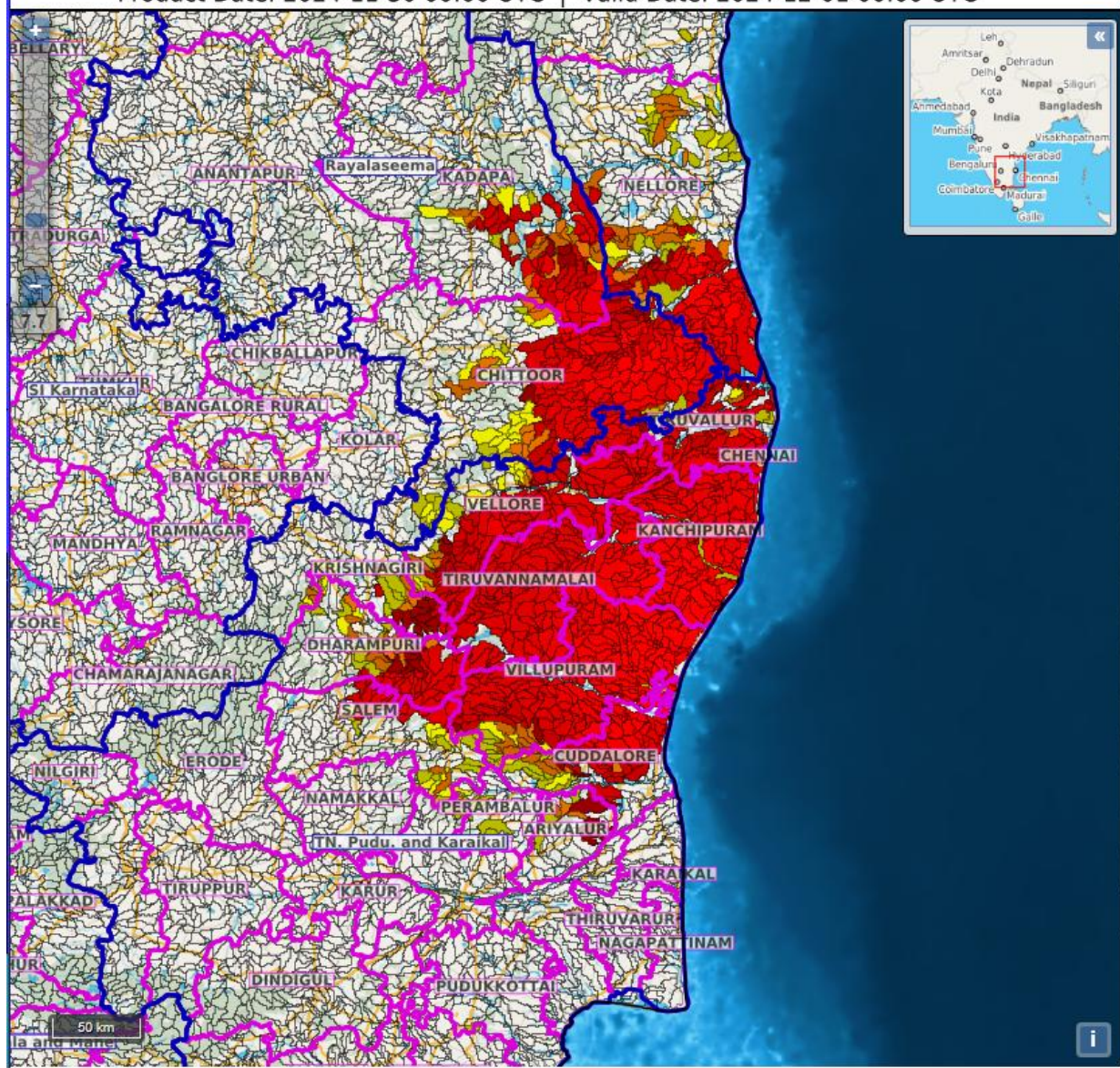
Flash Flood Guidance

45 IST




SAsiaFFGS - South Asia Flash Flood Guidance System

2

Product: NCUM FFR | Timescale: 24-hr | Region: "REGIONAL"
Product Date: 2024-11-30 00:00 UTC | Valid Date: 2024-12-01 00:00 UTC

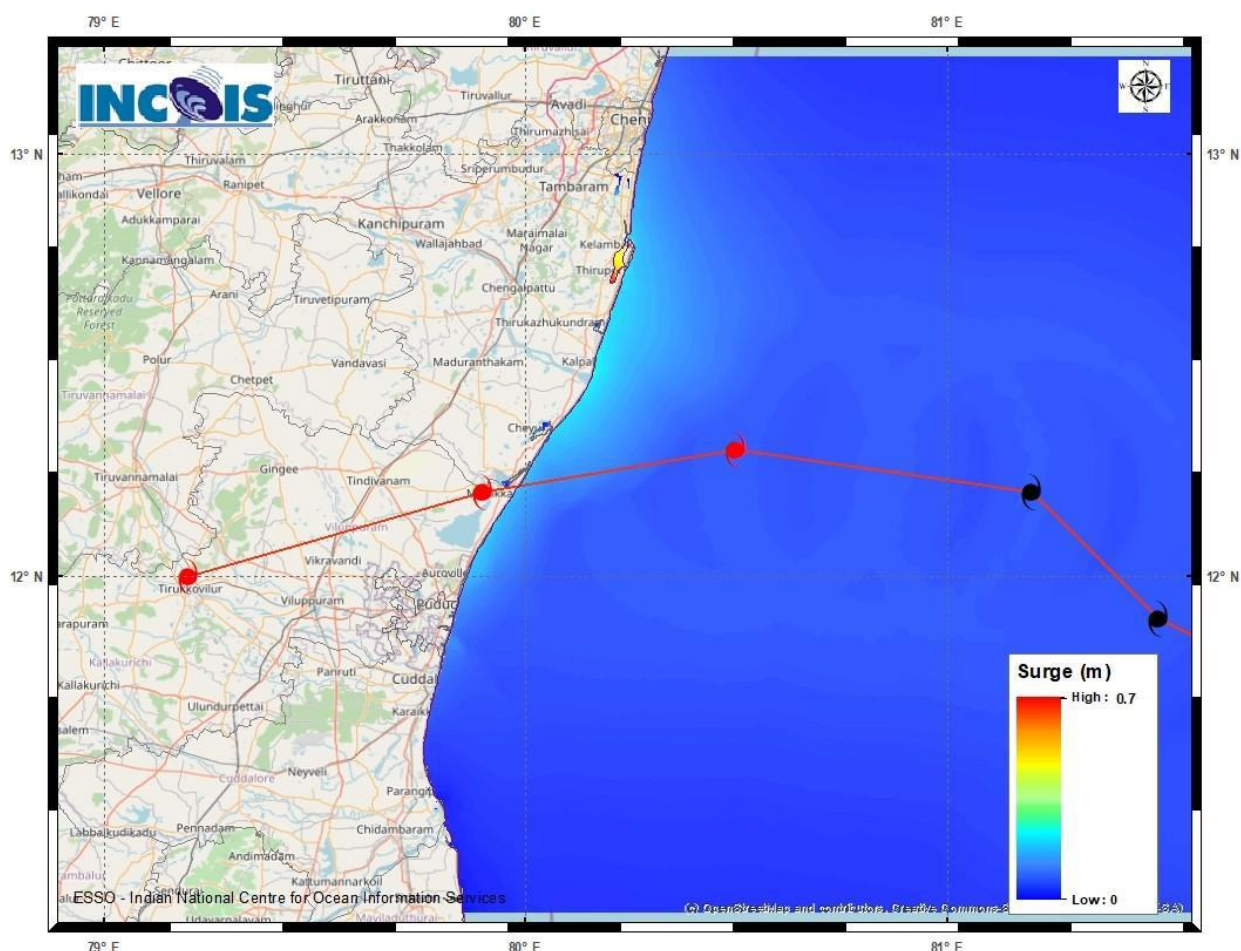


Flash Flood Risk

	High Risk (Take Action)
	Moderate Risk (Be Prepared)
	Low Risk (Be Updated)

Contact: Cyclone Warning Division, Office of the Director General of Meteorology, India Meteorological Department, Ministry of Earth Sciences, E-mail: cyclonewarningdivision@gmail.com, Website: rsmcnewdelhi.imd.gov.in, Spatial rainfall distribution: Isolated: <25%, A few: 26-50%, Many: 51-75%, Most: 76-100%, Rainfall amount (mm): Heavy rain: 64.5 – 115.5, Very heavy rain: 115.6 – 204.4, Extremely heavy rain: 204.5 or more.

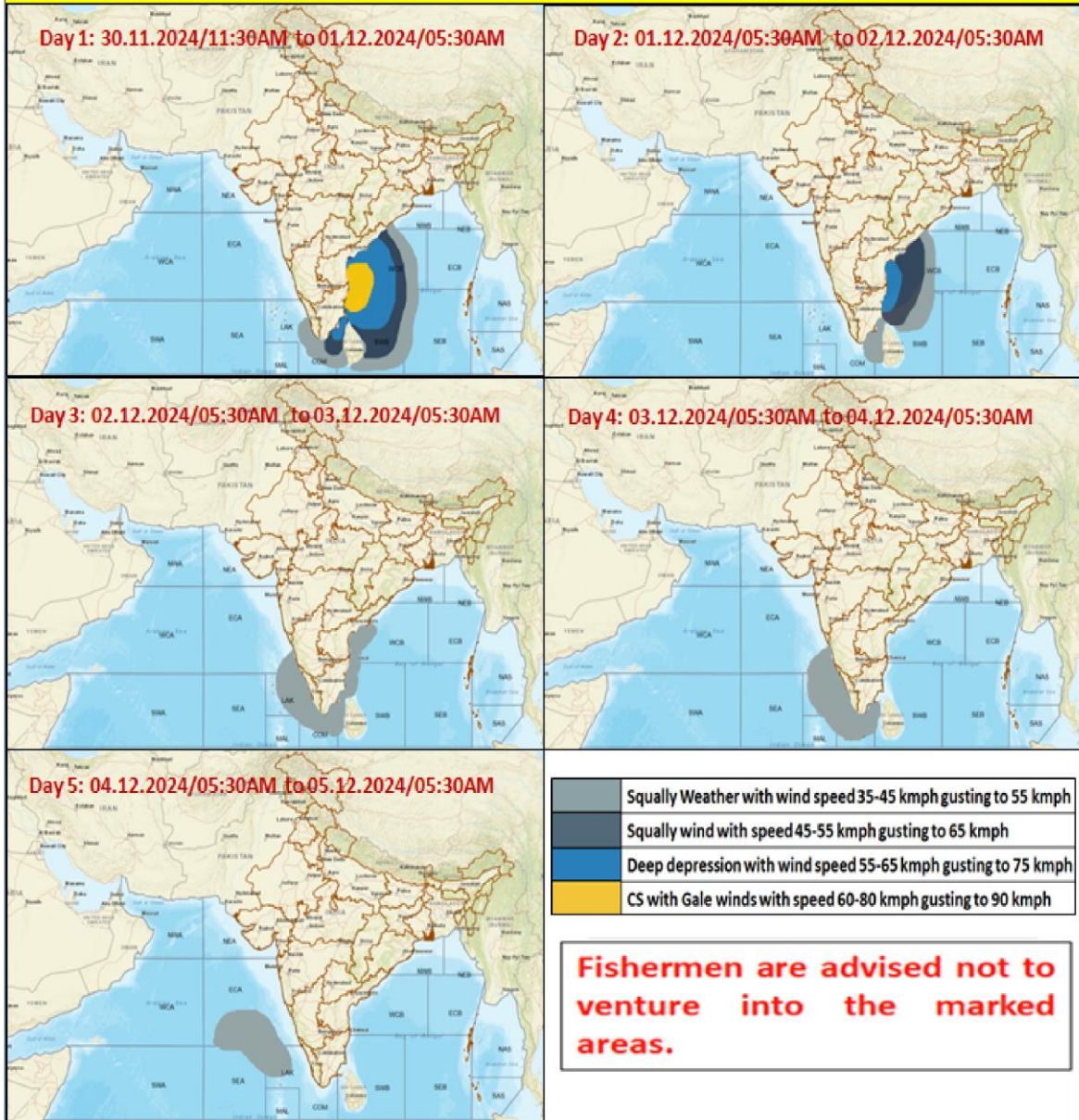
Storm Surge graphics



DISTRICT	STATE / UNION TERRITORY	NEAREST PLACE OF HABITATION	STORM SURGE (m)*	EXPECTED INUNDATION EXTENT (km)
<u>Kancheepuram</u>	<u>Tamil Nadu</u>	<u>Muthukadu</u>	<u>0.2-0.7</u>	<u>Upto 0.13</u>

Contact: Cyclone Warning Division, Office of the Director General of Meteorology, India Meteorological Department, Ministry of Earth Sciences, E-mail: cyclonewarningdivision@gmail.com, Website: rsmcnewdelhi.imd.gov.in, Spatial rainfall distribution: Isolated: <25%, A few: 26-50%, Many: 51-75%, Most: 76-100%, Rainfall amount (mm): Heavy rain: 64.5 – 115.5, Very heavy rain: 115.6 – 204.4, Extremely heavy rain: 204.5 or more.

Fishermen Warning Graphics



Contact: Cyclone Warning Division, Office of the Director General of Meteorology, India Meteorological Department, Ministry of Earth Sciences, E-mail:cyclonewarningdivision@gmail.com, Website: rsmcnewdelhi.imd.gov.in, Spatial rainfall distribution: Isolated: <25%, A few: 26-50%, Many: 51-75%, Most: 76-100%, Rainfall amount (mm): Heavy rain: 64.5 – 115.5, Very heavy rain: 115.6 – 204.4, Extremely heavy rain: 204.5 or more.

Significant Rainfall recorded during past 24 hours till 0830 hours IST of today 30.11.2024 (in cm):

Tamil Nadu, Puducherry & Karaikal:

Ennore AWS (Tiruvallur) 13, Kathivakkam (Chennai) 12, Thiruvottiyur (Chennai), Tondiarpet (Chennai), Sholinganallur (Chennai), CD Hospital Tondiarpet (Chennai), Basin Bridge (Chennai) 9 each, Ponneri (Tiruvallur), Manali (Chennai), Ice House (Chennai), Chennai (N) (Chennai), Zone 05 Chennai Central (Chennai) 8 each, Adyar (Chennai), Alandhur (Chennai), Kolathur (Chennai), YMCA Nandnam (Chennai), Madhavaram (Chennai), Anna University ARG (Chennai), Chennai Collector Office (Chennai), DGP Office (Chennai), Sholinganallur (Chennai), Puzhal (Chennai), Hindustan_University (Chengalpattu), Manali New Town (Chennai), Vadapalani (Chennai) 7 each;

Rayalaseema:

Sullurpeta (Tirupati) 6, Tada (Tirupati) 5, Tirupati Aero (Tirupati) 5, Srikalahasti (Tirupati) 4, Thottambedu (Tirupati) 4;

Coastal Andhra Pradesh & Yanam:

Nellore (Nellore) 2, Yelamanchili (Anakapalli) 2, Ranastalam (Srikakulam) 2, Garividi (Vizianagaram) 2, Pusapatirega (Vizianagaram) 2, Nellimarla (Vizianagaram) 2, Cheepurupalle (Vizianagaram) 2, Denkada (Vizianagaram) 2, Narsipatnam (Anakapalli) 2;

Kerala & Mahe:

Vattavada (Idukki) 1